

Newsletter of The Katherine Anne Porter Society

Vol 1 No. 1

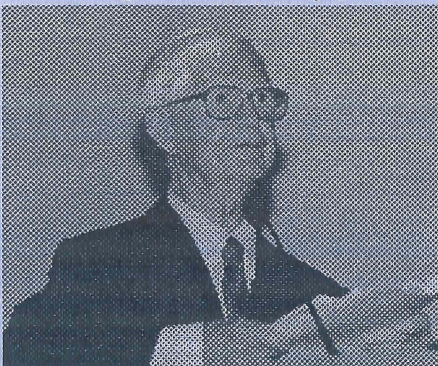
May 15, 1994

Katherine Anne Porter Society at ALA Symposium on Women Writers

The second session of papers organized by the Katherine Anne Porter Society was presented at a Symposium on Women Writers sponsored by the American Literature Association in October 1993 in San Antonio. Virginia Spencer Carr of Georgia State University chaired the session. Three papers were presented: Rae Carlton Colley of Emory University, "Sick on the Subject of Sex: Porter's Marginalia on D. H. Lawrence"; Janis P. Stout, Texas A&M University, "Katherine Anne Porter's 'Reflections on Willa Cather'"; and Darlene Harbour Unrue, University of Nevada, Las Vegas, "Doctor Freud and Miss Katherine Anne Porter." An audience of about twenty-five attended. All three papers drew on marginalia in Porter's personal library, housed at McKeldin Library, the University of Maryland. Colley concluded that "no other artist so inspired Porter" as Lawrence and that her essay "A Wreath for the Gamekeeper" is actually a diatribe against censorship." Stout presented a deconstructive reading of Porter's essay on Cather. Unrue discussed three Freudian subjects that were important to Porter—dreams, children, and the nature of evil.

Katherine Anne Porter Society Founded

The Katherine Anne Porter Society was founded May 15, 1993, the one hundred and third anniversary of Katherine Anne Porter's birth. The process to establish the society was begun in December 1992 and completed in time for the 1993 Baltimore convention of the American Literature Association, of which the Katherine Anne Porter Society is a member society. The founding committee was made up of Professors Virginia Spencer Carr, Georgia State University; John Edward Hardy, the



University of Illinois at Chicago; George Hendrick, the University of Illinois at Champaign-Urbana; Janis Stout, Texas A & M University; and Darlene Harbour Unrue, the University of Nevada at Las Vegas.

The first formal function of the society was a celebration dinner held Friday, May 30, 1993, at the Stouffer Harborplace Hotel, site of the ALA convention. In the Pride of Baltimore Room overlooking the harbor, society members and guests dined on Maryland crab bisque; a salad of watercress, jicama, and limestone lettuce with pepper dressing; stuffed breast of chicken with saffron orzo and jumbo lump crabmeat; fresh vegetables; strawberry chiffon torte with bittersweet chocolate; and a selection of premium wines and liquor—a menu the founding committee hoped would not dishonor Katherine Anne.

After dinner Cleanth Brooks, long-time friend of Katherine Anne Porter, addressed the group on the subject "Remembering Katherine Anne Porter." Professor Brooks's remarks included excerpts from many years' correspondence between his wife, Tinkum, and Katherine Anne.

Persons also attending the dinner were Beth Alvarez, Roy Alvarez, Alfred Bendixen, Virginia Spencer Carr, Barbara Thompson Davis, Jane DeMouy, Blanche Ebeling-Koning, Carl H. Griffin, Catherine Carr Lee, Dave McCutcheon, Danyal Mueenuddin, Karen Orchard, Paul Porter, Johanna Siebel, Janis Stout, Darlene Unrue, John Unrue, Fern Wilkins, and William Wilkins.

The first Katherine Anne Porter session at the ALA was held

Thomas Walsh's Book wins Holman Award

Thomas F. Walsh's *Katherine Anne Porter and Mexico: The Illusion of Eden* (University of Texas Press, 1992) won the C. Hugh Holman Award for 1992. The award is presented annually by the Society for the Study of Southern Literature "for the best work of literary scholarship or literary criticism in the field of Southern Literature." Jason Rosenblatt accepted the award for Professor Walsh, who died in 1991. In the Society's presentation statement, Dorothy M. Scura praised Walsh's book as the definitive work on the subject of Porter's years in and relationship with Mexico. "Katherine Anne Porter and Mexico is quite simply," Scura said, "a masterful work by a masterful critic."

Katherine Anne Porter Society in Residence at the University of Nevada, Las Vegas

The Katherine Anne Porter Society is currently in residence at the University of Nevada, Las Vegas. Correspondence regarding membership or announcements for the newsletter should be addressed to Darlene Harbour Unrue, Department of English, University of Nevada at Las Vegas, Las Vegas, NV 89154.

Continued on page 2

Katherine Anne Porter Society at 1994 ALA Convention

The Katherine Anne Porter Society will sponsor a Katherine Anne Porter Session titled "Katherine Anne Porter: The Southern Connection" at the ALA annual Conference in San Diego, June 1-5, 1994, at the Bahia Resort Hotel. The session is scheduled for Thursday, June 2, 1994, 4:00-5:20, in Bahia Belle II. Chair of the session is Janis P. Stout, Texas A&M University. Papers to be presented are "Slaves, Slavery, and the Porters" Myth and Reality in the Fiction of Katherine Anne Porter," George Hendrick, University of Illinois; "Cather's Influence on Katherine Anne Porter's 'He,'" Merrill Skaggs, Drew University; and "Understanding Ellen Gilchrist's 'Rich' via Four Porter Intertexts," Margaret Bauer, Texas A&M University.

Katherine Anne Porter Literary Trusteeship Assumed by Barbara Thompson Davis

Barbara Thompson Davis has accepted the literary trusteeship for the Estate of Katherine Anne Porter. Porter scholars and students have long known the name of Barbara Thompson. More than thirty years ago she conducted the important and often quoted interview with Katherine Anne Porter for the *Paris Review* (No. 29 [1963], pp. 87-114).

Founding Committee Becomes Coordinating Committee, Includes Alvarez

The Founding Committee of the Katherine Anne Porter Society, Virginia Spencer Carr, John Edward Hardy, George Hendrick, Janis P. Stout, and Darlene Harbour Unrue, agreed to re-name itself the Coordinating Committee of The Katherine Anne Porter Society and to invite Dr. Ruth M. (Beth) Alvarez, Curator of Literary Manuscripts at the University of Maryland, which houses the Katherine Anne Porter Archives, to join the five other members on the committee.

Continued from page 1

Sunday, May 30, 10:30-11:50, under the title "Katherine Anne Porter in the Modern Age." The following papers were presented: "Porter and the Twentieth-Century Intellectual Scene," Janis Stout, Texas A & M University; "'Hacienda' and Eisenstein's *Que Viva Mexico!*," Ruth M. (Beth) Alvarez, University of Maryland; and "Katherine Anne Porter and the Liberal Impulse," Will Brantley, Middle Tennessee State University. Darlene Harbour Unrue presided. At 4:00 the same day among the five seminars that closed the convention was "Katherine Anne Porter's *Ship of Fools*." The seminar, which required prior registration, was chaired jointly by Virginia Spencer Carr, Georgia State University, and Jackson Bryer, the University of Maryland. Twelve people participated.

The Katherine Anne Porter Archives at the University of Maryland By Ruth M. Alvarez

The period since the last May 1993 inaugural meeting of the Katherine Anne Porter Society has been an extremely busy and productive one for the Archives and Manuscripts Department of the University of Maryland at College Park Libraries where the Papers of Katherine Anne Porter and other Porter-related collections are housed. A reorganization affecting those collections took place in January 1993. The Rare Books and Literary Manuscripts Department, headed by Blanche Ebeling-Koning, was disbanded. The rare book collection, including Porter's personal library, became part of the renamed Marylandia and Rare Books Department, under Tim Pyatt, the new curator. All of the literary manuscript collections, including the Porter Papers, were moved under the jurisdiction of the Archives and Manuscripts Department (formerly Historical Manuscripts and Archives), whose curator is Lauren Brown. I accepted a contract appointment as acting Curator of Literary Manuscripts on January 21, 1993, and officially assumed the permanent position on September 7, 1994.

There have been significant acquisitions of Porter-related materials in the last year. The official opening of the papers of Thomas F. Walsh and Mary Louis Doherty, given to the Libraries by María A. Walsh in memory of her husband, was celebrated on May 27, 1993. Paul Porter generously donated four photographs and a program from the May 15, 1993, dedication of the Texas historical marker for Katherine Anne Porter in the Kyle, Texas, cemetery where her paternal grandparents are buried. His gift also included a deck of French playing cards, used by Porter when she lived in Paris in the 1930s. Two other recent acquisitions were purchases. Four letters and two postcards from Porter to Father John Wise, a professor at Loyola College in Maryland, were acquired from the Loyola College archives. Wise, whose letters to Porter are among the Papers of Katherine Anne Porter, initiated the correspondence by extending an invitation for Porter to speak at Loyola in May 1962. They continued the exchange into 1963, during Porter's visit to Rome. The second of these acquisitions is a variant typescript version of "A Bright Particular Faith," a

Continued on page 3

In Memoriam

Isabel Bayley

Isabel Bayley, literary trustee for the estate of Katherine Anne Porter since 1983, died July 17, 1993, in Toronto, Canada. Mrs. Bayley met and became friends with Katherine Anne Porter in 1948 at a writers' seminar Porter was teaching in Kansas, and they remained friends until Porter's death. Bayley selected and edited *Letters of Katherine Anne Porter*, published by The Atlantic Monthly Press in 1990. She is survived by her husband, W. Hewlitt Bayley.

Cleanth Brooks

Cleanth Brooks, eminent literary critic, Gray Professor Emeritus of Rhetoric at Yale University, and long-time friend of Katherine Anne Porter, died May 10, 1994, at his home in New Haven, Connecticut. Mr. Brooks, who was considered a founder of the New Criticism movement, was the author of many books, among which are *Modern Poetry and the Tradition* (1939), *The Well Wrought Urn* (1947), *William Faulkner: The Yoknapatawpha Country* (1963), and *The Language of the American South* ((1985). With Robert Penn Warren he wrote *Understanding Poetry* (1938) and *Modern Rhetoric* (1950). A Rhodes Scholar, he was cultural attaché at the United States Embassy in London and Jefferson Lecturer at the Library of Congress. He was married to Edith Amy (Tinkum) Blanchard, who died in 1986. Mr. Brooks was 87 at the time of his death.

Seymour Lawrence

Seymour Lawrence, Katherine Anne Porter's editor and friend who guided *Ship of Fools* through its final years of completion, died January 4, 1994, in Englewood, Florida. Lawrence was an independent book publisher associated at one time or another with Atlantic-Little, Brown, Dell, E. P. Dutton, and Houghton Mifflin. In addition to Porter, Lawrence published Thomas Berger, Richard Brautigan, J. P. Donleavy, Jim Harrison, William Saroyan, Kurt Vonnegut, and Frank Conroy.

Katherine Anne Porter:

A List of Holdings in the Archives and Manuscripts Department, Collection Management and Special Collections Division, University of Maryland at College Park Libraries

I. Literary Manuscripts Collections

Papers of Cyrilil Abels—20th century. Abels was an editor at *Mademoiselle* magazine from 1950 through the early 1970s. In this position, she published work by Katherine Anne Porter and later became Porter's literary agent. The collection contains letters, postcards and notes to and from Porter concerning publishing efforts and daily life.

Papers of Mary Louis Doherty—20th century. Doherty, an expatriate American, has lived in Mexico most of her life, working for Mexican government officials in various capacities as well as private institutions and individuals. She met Katherine Anne Porter in Mexico City in 1921, and they corresponded after Porter's return to the United States. Among the materials in this collection are ten letters from Porter to Doherty over a twenty-year span. The letters discuss Mexico, politics, writing and personal life.

Papers of Donald Elder—20th century. Elder was an editor with Doubleday, Doran and Co. and the author of *Ring Lardner, A Biography*. The translation from Spanish of *The Itching Parrot*, published under Porter's name, was edited by Elder for his publishing company in 1942. Elder's papers are comprised exclusively of Porter's correspondence about a variety of topics, mostly concerning writers and writing, and cover the period 1940 to 1963.

Papers of Ann Heintze—20th century. Heintze was the niece of Katherine Anne Porter and had been a professional dancer. She travelled with Porter to Europe and Mexico in the 1960s. Her papers include postcards and photographs concerning the Porter family.

Papers of Seymour Lawrence—20th century. Lawrence was Porter's publisher, first at Atlantic Monthly Press and later with

his independent imprint, Seymour Lawrence, Inc. In his role of editor in chief at Atlantic Monthly, Lawrence oversaw the publication of Porter's novel, *Ship of Fools*. The collection primarily deals with their collaboration on this book. An addendum to this collection is unprocessed, but a preliminary inventory is available.

Papers of Harry C. Perry—20th century. Perry was Katherine Anne Porter's tax accountant for several years. His papers include correspondence, financial records and newspaper clippings relating to Porter. This collection, dating from 1959 to 1966, is unprocessed, but a preliminary inventory has been prepared.

Papers of Katherine Anne Porter—20th century. The University of Maryland at College Park Libraries house the primary archive of this important American author. Although Porter is known primarily for her short stories and the novel, *Ship of Fools*, she also published nonfiction. She was awarded both a Pulitzer Prize and the National Book Award for *The Collected Stories of Katherine Anne Porter* in 1966. Porter's extensive personal papers reflect her interests in writing, travel, politics and current events and also document events in her private life. The Porter collection includes correspondence, notes and drafts for her works, publications, legal documents and financial records.

The papers also include over 1,500 photographs from Katherine Anne Porter's personal collection, dating from the 1890s to 1979. Primary subjects include Porter, her family, friends, homes and places she visited. The photographs include both snapshots and professional portraits.

Porter also donated various items of memorabilia to the Libraries. The memorabilia includes Mexican pottery, personal items (playing cards, napkins and a glove which purportedly belonged to her mother), awards, diplomas and a wooden Buddha figure given to Porter by her brother in 1904. Many of these objects are housed in the Katherine Anne Porter Room in the McKeldin Library.

Records of Katherine Anne Porter at One Hundred—20th century. Records concerning the conference and exhibition at the University of Maryland, May 9-11, 1991, in honor of Porter's one-

hundredth birthday. The celebration also included lectures in public libraries and a travelling exhibition which preceded the University of Maryland conference. The collection contains correspondence, financial and budgetary records, publications, legal documents, press releases, working papers and administrative records. Videotapes of the conference are available in Nonprint Media Services, Hornbake Library.

Papers of Paul Porter—20th century. Porter is the nephew of Katherine Anne Porter and served as her legal guardian from 1977 to 1980. The collection includes a variety of material concerning the personal and professional interests of Katherine Anne Porter and the Porter family. Paul Porter has also donated additional materials which are unprocessed.

Papers of E. Barrett Prettyman, Jr.—20th century. Prettyman was Katherine Anne Porter's lawyer and close friend from the mid-1960s until her death in 1980. The Prettyman collection includes personal letters, business correspondence and photographs relating to Porter. The papers are unprocessed and access is restricted to researchers with Prettyman's written approval.

Papers of Mr. and Mrs. John A. Prince—20th century. John Prince, who taught for a brief period at the University of Missouri and later had careers in catering and real estate, developed friendships with several artists and writers during and after World War II. In 1954, he boarded with Marcella Comès Winslow, a Washington artist and friend of Katherine Anne Porter. Prince met Porter through his association with Winslow and was Porter's neighbor and friend in Georgetown from 1959 to 1962. He and his wife corresponded regularly with her for several years. The Prince collection contains correspondence, photographs, newspaper clippings, financial records, legal documents and published copies of Porter's books. This collection is unprocessed, but a preliminary inventory is available.

Papers of Grace Delafield Day Spier—20th century. Spier became active in the literary and intellectual circles of Greenwich Village in the second decade of

the twentieth century. Her husband, Franklin Spier, worked in publishing and advertising and her sister, Dorothy Day, was editor of the *Catholic Worker*. From roughly 1925 to 1930, Spier was one of Katherine Anne Porter's closest friends in New York City. The Spier collection includes letters from Katherine Anne Porter about mutual acquaintances and personal life. This correspondence covers the period from 1928 to 1931.

Papers of Thomas F. Walsh—20th century. Walsh, an American literature professor at Georgetown University, met Katherine Anne Porter in 1960 and subsequently published several scholarly works concerning her writing. Walsh frequently visited Mexico where Porter lived sporadically between 1920 and 1931. In the mid-1970s, Walsh began work on a book that combined his interest in Porter with his love of Mexico and renewed his acquaintance with the author. His book, *Katherine Anne Porter and Mexico: The Illusion of Eden* was published posthumously in 1992. Walsh's papers include notes and drafts for his books and articles, copies of published and unpublished material by and about Porter, research materials on Mexico and extensive notes relating to his book.

Glenway Wescott Collection—20th century. Wescott was the author of novels, poetry, short stories and essays. He met Porter in Paris in the 1930s, and they corresponded for many years. The Wescott collection includes several versions of the manuscript for a never-completed volume of Porter's letters. The book was titled *Letters to a Circle of Friends 1933-1962: Thirty Years of Friendship* and was to include correspondence from Porter, Wescott, Monroe Wheeler, Barbara Harrison Wescott, George Platt Lynes, Eugene Dove Pressly and Russell Lynes. Originals of some of the letters are included in the manuscript collection along with notes and miscellaneous published material by and about Porter. This collection is unprocessed, but a preliminary inventory is available.

II. Library of Katherine Anne Porter

Katherine Anne Porter donated her personal library to the University of Maryland at College Park Libraries. Her library consists of approximately 3,700 titles and reflects a wide variety of subjects and

interests. Many of the books are editions of contemporary poems, essays and novels. Others concern art, ancient history, modern history, music and dance. The collection includes many editions and translations of Porter's own works. A portion of Porter's library is housed in the Katherine Anne Porter Room, which was established in 1968 at the McKeldin Library in honor of her gifts to the university.

III. Furniture and Art in the Katherine Anne Porter Collection

Along with her personal papers and library, Porter gave several pieces of furniture and works of art to the University of Maryland at College Park Libraries. Much of the furniture is Italian, French or Spanish in origin and dates from the fifteenth century. The Katherine Anne Porter Room in the McKeldin Library houses this furniture, which includes an eighteenth-century desk Porter used for thirty years, a Louis XV fruitwood sofa, a spinet and several chairs and tables.

The works of art include two oil paintings of Porter, one of which was commissioned and donated by her nephew, Paul Porter. A caricature of Porter, drawn by Mexican artist Miguel Covarrubias, is also in the collection, as well as an ink caricature by William Penè DuBois of Porter and thirty-five other noted authors of the twentieth century. In addition, the collection includes two ink drawings by Porter and a colorful painting by Arthur Long. Most of these works also are housed in the Katherine Anne Porter Room.

IV. University Archival Record Groups

Records of the Library Director's Office—20th century. This record group documents the growth and development of the University of Maryland at College Park Libraries. Included is correspondence between the Library Director's Office and the Office of the President concerning the establishment of the Katherine Anne Porter collection. The files contain letters of Porter, the Assistant to the President for University Relations and the Library Director, along with news releases and press clippings concerning her donation and the Katherine Anne Porter Room.

V. University Publications

Libraries. Katherine Anne Porter at One Hundred: New Perspectives. Catalog from the exhibition held in conjunction with the conference celebrating Porter's one-hundredth birthday, May 9-11, 1991. Contains illustrations and descriptions of photographs, letters, books and memorabilia in the Porter collection at the University of Maryland.

portion of Porter's biography of Cotton Mather that was published in *Hound & Horn* in 1934.

The most important and extensive addition to the Porter-related materials in the last fiscal year is the Papers of Isabel Bayley. The gift was made by W. Hewitt Bayley in memory of his wife, Isabel Bayley, former literary trustee of the estate of Katherine Anne Porter. In 1948, Isabel Bayley was an aspiring writer when she met Katherine Anne Porter at a writing seminar at the University of Kansas. They formed a warm and enduring friendship that remained an important support to Porter until her death in 1980. During this time, Mrs. Bayley read widely and wrote fiction, some of which was published. In 1953, Porter authorized Mrs. Bayley to work on the marginalia in her personal library for possible publication, a project which was never completed. In 1974, a provision of Porter's will designated Mrs. Bayley as her literary trustee upon her death. After Mrs. Bayley officially assumed her role as literary trustee in 1983, she began her work on Porter's correspondence which resulted in her one-volume edition, *Letters of Katherine Anne Porter* (New York: Atlantic Monthly Press, 1990).

Mrs. Bayley's papers include correspondence, notes and drafts for her works, publications (books and periodicals), and photographs. Of the correspondence, the most important is that of Mrs. Bayley and Porter, which stretches from July 16, 1948, to September 3, 1980. Also among Mrs. Bayley's papers are correspondence of Glenway Wescott with W. Somerset Maugham (1940-48), Alan Searle (1961-65), and Wallace Stevens (1921) as well as correspondence of Monroe Wheeler with Robin Maugham (1945), W. Somerset Maugham (1941-61), Nelson Rockefeller (1968), Alan Searle (1965), and Wallace Stevens (1923). Access to these portions of the collection is restricted to researchers with approval from the literary trustee of the estate of Katherine Anne Porter (Barbara Thompson Davis). Also of particular interest are the materials Mrs. Bayley gathered while preparing her edition of Porter's letters. These include not only successive drafts of the work in process but also photocopies of Porter's correspondence. A large part of the latter duplicates the holdings in the Papers of Katherine Anne Porter, but there are photocopies of letters obtained from private individuals and other repositories. Researchers may also wish to examine the materials Mrs. Bayley gathered for her project on Porter's marginalia.

The Katherine Anne Porter Room in McKeldin Library was officially reopened at the time of the celebration in honor of Mrs. Walsh's gift. During the renovations to McKeldin Library (1991-92), the walls separating the offices adjacent to the Porter Room were demolished and the resulting space made into an exhibition/reception area. The Porter Room proper now serves as a living museum to Miss Porter. In November 1993, three volunteer docents, Freddie Baer, Dorothy Galvin, and Shirley Bauer, initiated an experimental opening of the room to visitors on Wednesday afternoons. The operation was expanded to two afternoons (Tuesdays and Wednesdays) during the second semester with the recruitment of three additional docents, Rose Ann Jackson, Lois Hamilton, and Marvin Dicker. The docents have been entertaining an average of twenty-five guests a month and have agreed to continue the program during the next academic year.

Scholarly interest in Porter appears to be on the rise. In the past year, Porter researchers from academic institutions in New York, Texas, Virginia, Florida, and Nevada have visited the repository. I have had correspondence with researchers from those states as well as others in Missouri, Tennessee, and South Carolina. Of particular interest to all researchers is the proposed microfilming of the collection. Preliminary work on preparing the papers for microfilming has begun. Presently, no specific dates have been set for closing parts of the collection to researchers. Tentative plans call for it to take place in two stages. In the first, Series III through VI would be closed after reprocessing and during the actual microfilming; Series I and II would be closed after the first group was reopened for research. Director of Libraries, H. Joanne Harrar, has informed the Archives and Manuscripts Department that researchers must be notified at least six months prior to the first of these closings. Anyone who has any questions or concerns, should contact me, Beth Alvarez, Curator of Literary Manuscripts, Archives and Manuscripts, McKeldin Library, University of Maryland, College Park MD 20742 301-405-9298 ra60@umail.umd.edu.

See insert for the list of Katherine Anne Porter and Porter-related holdings at the McKeldin Library.

Katherine Anne Porter Bibliography*

Works by or about Porter or of related interest

Published in 1993 or 1994

Books

- Alvarez, Ruth M. and Thomas Walsh. *Uncollected Early Prose of Katherine Anne Porter*. Austin: Univ. of Texas Press, 1994.
- Brantley, Will. "Memoirs from Outside the Shelter: Lillian Hellman and Katherine Anne Porter." *Feminine Sense in Southern Memoir: Smith, Glasgow, Welty, Hellman, Porter, and Hurston*. Jackson: Univ. Press of Mississippi, 1993.
- Brinkmeyer, Robert H., Jr. *Katherine Anne Porter's Artistic Development: Primitivism, Traditionalism, and Totalitarianism*. Baton Rouge: Louisiana State Univ. Press, 1993.
- Carr, Virginia Spencer, ed. "Flowering Judas": *Katherine Anne Porter* [A Casebook]. Women Writers: Texts and Contexts Series. New Brunswick: Rutgers University Press, 1993.
- Givner, Joan. *The Self-Portrait of a Literary Biographer*. Athens: Univ. of Georgia Press, 1993.
- Winslow, Marcella Comès. *Brushes with the Literary: Letters of a Washington Artist, 1943-1959*. Baton Rouge: Louisiana State Univ. Press, 1993.

Articles

- The Spring 1993 issue of the *Southern Quarterly* (31, No. 3) is a Katherine Anne Porter number and contains the following three articles:
- Gretlund, Jan Nordby. "'The Man in the Tree': Katherine Anne Porter's Unfinished Lynching Story," pp. 7-16.
- Jones, Suzanne W. "Reading the Endings in Katherine Anne Porter's 'Old Mortality,'" pp. 29-44.

Continued on page 4

Continued from page 3

Unrue, Darlene Harbour. "Katherine Anne Porter and Henry James: A Study in Influence," pp. 17-28.

Unrue, Darlene Harbour. "Katherine Anne Porter, Politics, and Another Reading of 'Theft.'" *Studies in Short Fiction* 30 (1993): 119-126.

Bibliography entry:

Unrue, Darlene Harbour. "Katherine Anne Porter." *Modern Women Writers*, pp. 44-49. Essential Bibliography of American Fiction, ed. Matthew Bruccoli and Judith S. Baughman. New York: Facts On File, 1994.

Forthcoming:

Book

Stout, Janis. *A Sense of the Times: Katherine Anne Porter* University Press of Virginia early in 1995.

Articles

Austensfeld, Thomas. "Katherine Anne Porter Abroad: The Politics of Emotion," to appear in the Spring 1994 issue of *Literatur in Wissenschaft und Unterricht*.

Hafen, P. Jane. "Katherine Anne Porter's 'The Old Order' and *Agamemnon*," to appear in *Studies in Short Fiction*.

Stout, Janis. "Katherine Anne Porter's 'Reflections on Willa Cather': A Duplicitous Homage," to appear in *American Literature*

* Send items for the Newsletter's bibliography to Professor Darlene Harbour Unrue, Department of English, University of Nevada, Las Vegas, Las Vegas, NV 89154.

Founding Membership of the Katherine

Anne Porter Society

Friends of the Society

Hewlitt Bayley, Scarborough, Ontario, Canada

Eleanor Clark, Cambridge, Massachusetts

Barbara Thompson Davis, New York, New York

Tillie Olsen, San Francisco, California

Paul Porter, Austin, Texas

William Jay Smith, Cummington, Massachusetts

María Walsh, Washington, D. C.

Rosanna Warren, Boston, Massachusetts

Eudora Welty, Jackson, Mississippi

William and Fern Wilkins, Columbia, Maryland

Marcella Comès Winslow, Washington D. C.

Members with academic association or scholarly interest

Ruth M. (Beth) Alvarez, University of Maryland

Charlotte Beck, Maryville College

Will Brantley, Middle Tennessee State University

Laura D. Breedlove, DeKalb College

Phyllis Bridges, Texas Woman's University

Cleanth Brooks, Yale University (Emeritus)

Lauren Brown, the University of Maryland

Rae Carlton Colley, Emory University

Blanche T. Ebeling-Koning, Smithsonian Institution

Janet Carey Eldred, University of Kentucky

Marilyn Elliot, Texas Woman's University

Nina Sue Faye, Hyattsville, Maryland

Jan Nordby Gretland, Odense (Denmark) University

John Edward Hardy, University of Illinois at Chicago (Emeritus)

George Hendrick, University of Illinois at Champaign-Urbana

Willene Hendrick, Independent scholar

Kathryn Hilt, New Jersey Institute of Technology

Maciej Holota, M. S.-C. University, Lublin, Poland

Suzanne W. Jones, University of Richmond

Mary M. Katzif, Independent scholar

Catherine Carr Lee, University of Central Oklahoma

David Locher, Independent scholar

Debby Lopez, University of Texas at San Antonio

Leila A. Merrill, Trinity University

Debra Modellmog, The Ohio State University

George Thomas Parsons, III, Independent scholar

Jo Ann Pavletich, University of Texas at Austin

Jordan L. Pecile, U. S. Coast Guard Academy

Karen A. Redfield, Madison Area Technical College

Helen Olszewski Reed, University of Maryland

Johanna Sieber, University of Vienna

Holly Franking Slegman, Independent scholar

Janis Stout, Texas A & M University

James T. F. Tanner, University of North Texas

Mary Titus, St. Olaf College

Darlene Harbour Unrue, University of Nevada, Las Vegas

Joseph Wiesenfarth, University of Wisconsin at Madison

For new membership or renewal for 1995, please send check for \$8 made out to KAP Society/UNLV; Department of English; University of Nevada, Las Vegas; Las Vegas, NV 89154-5071

Katherine Anne Porter Society at 1995 ALA Convention

The American Literature Association's sixth annual conference will be held in Baltimore, Maryland, May 26-28, 1995. The conference director is Gloria Cronin, Department of English, Brigham Young University, Provo, Utah 84602. Beth Alvarez of The University of Maryland will chair the Katherine Anne Porter session. Abstracts of papers submitted for consideration should be sent to Beth by November 1 (McKeldin Library, University of Maryland, College Park MD 20742). The first KAP Society business meeting, to include the adoption of by-laws, will be held at this conference.